

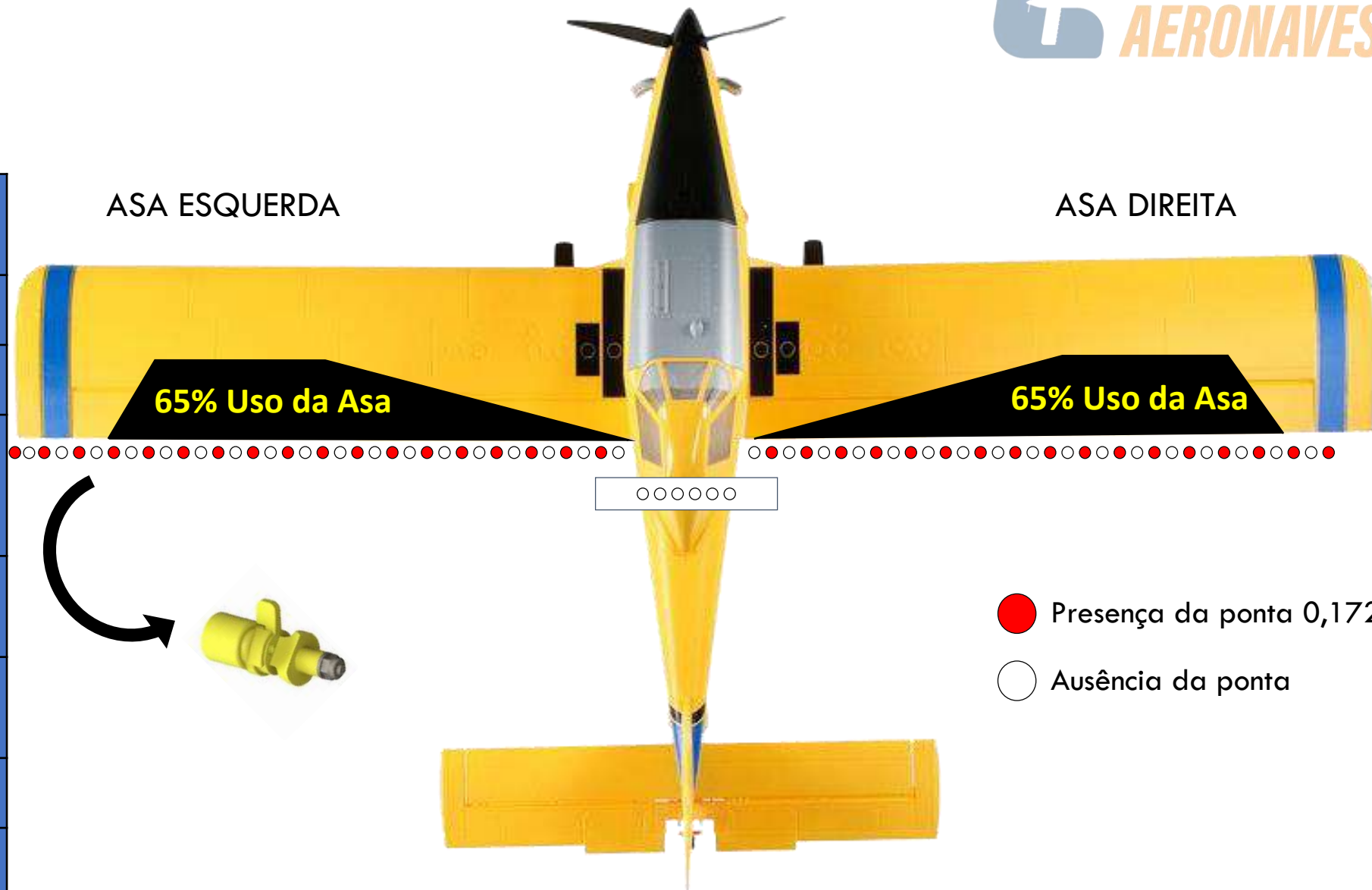


AIR TRACTOR 402 B

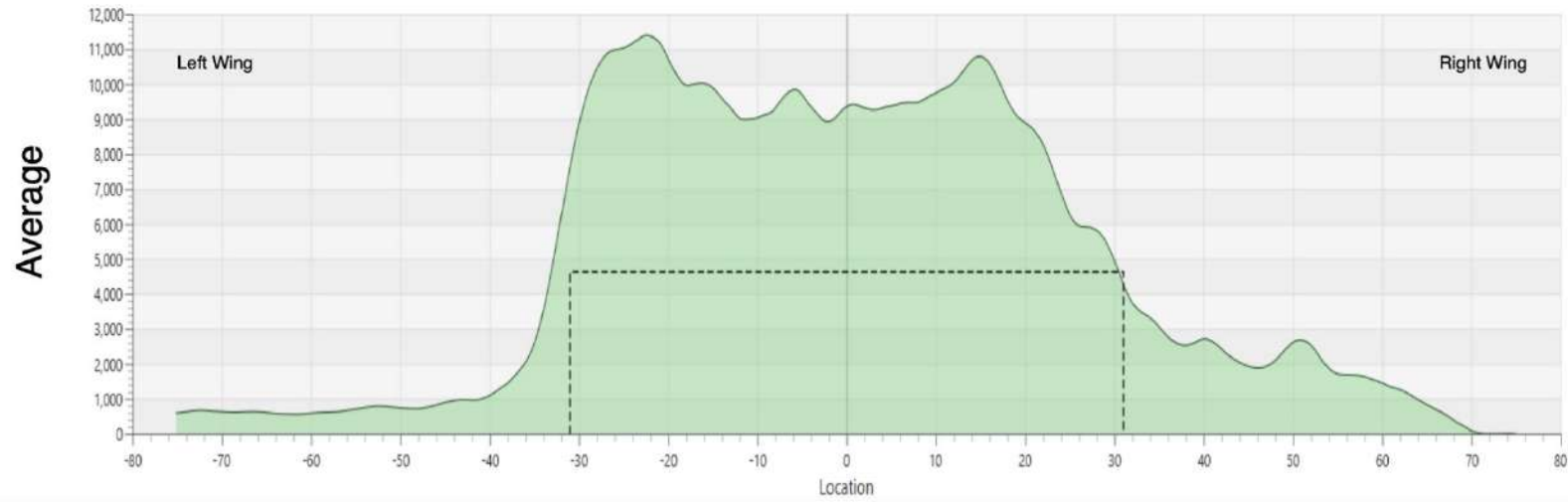
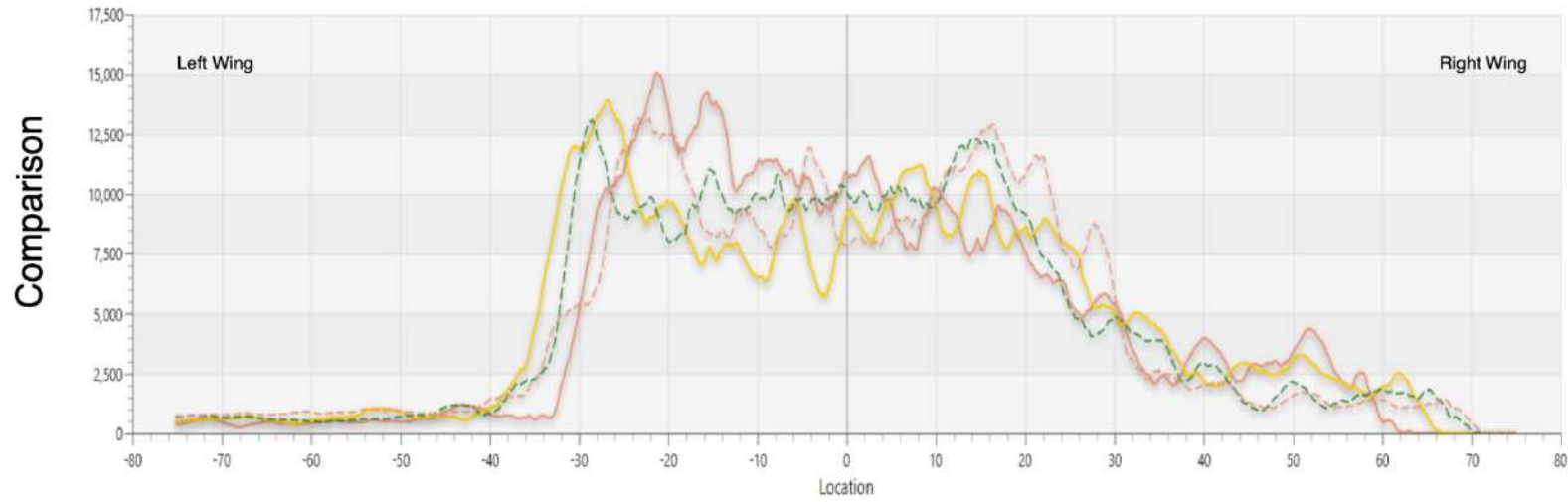


AIR TRACTOR 402B

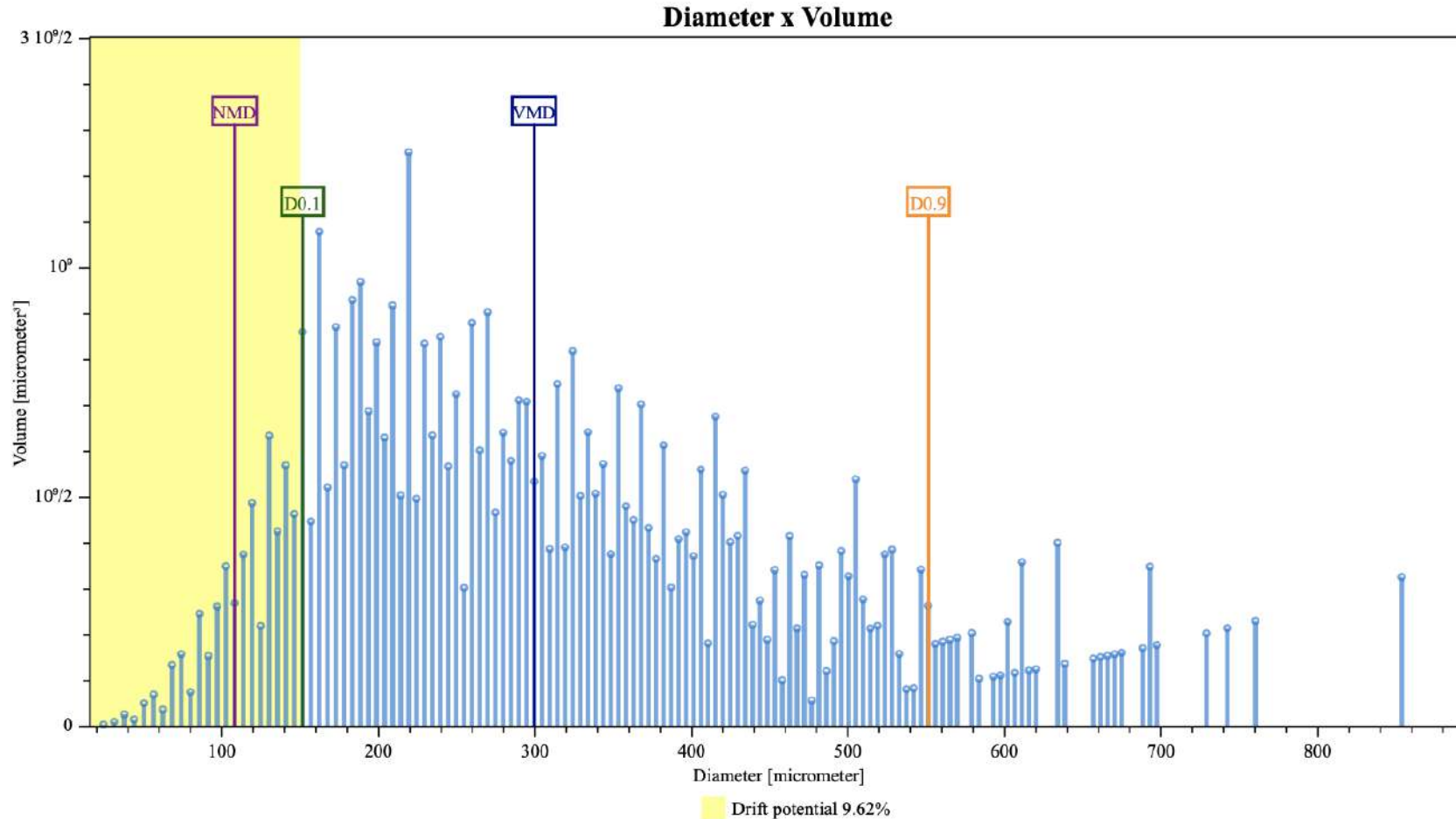
Taxa de Aplicação	50 litros/hectare
Altura do voo	6 metros
Faixa Efetiva	26 metros
Uniformidade (C.V.)	13% (carrossel) 13% (vai e vem)
Velocidade do voo	230 Km/h
Bicos/Qtde (ângulo)	CP03 / 36 (30°)
Pressão	32 PSI
DMV (Classe)	299 u (Grossa)
DV 0.1	151 u
DV 0.9	551 u



FAIXA EFETIVA DE DISTRIBUIÇÃO

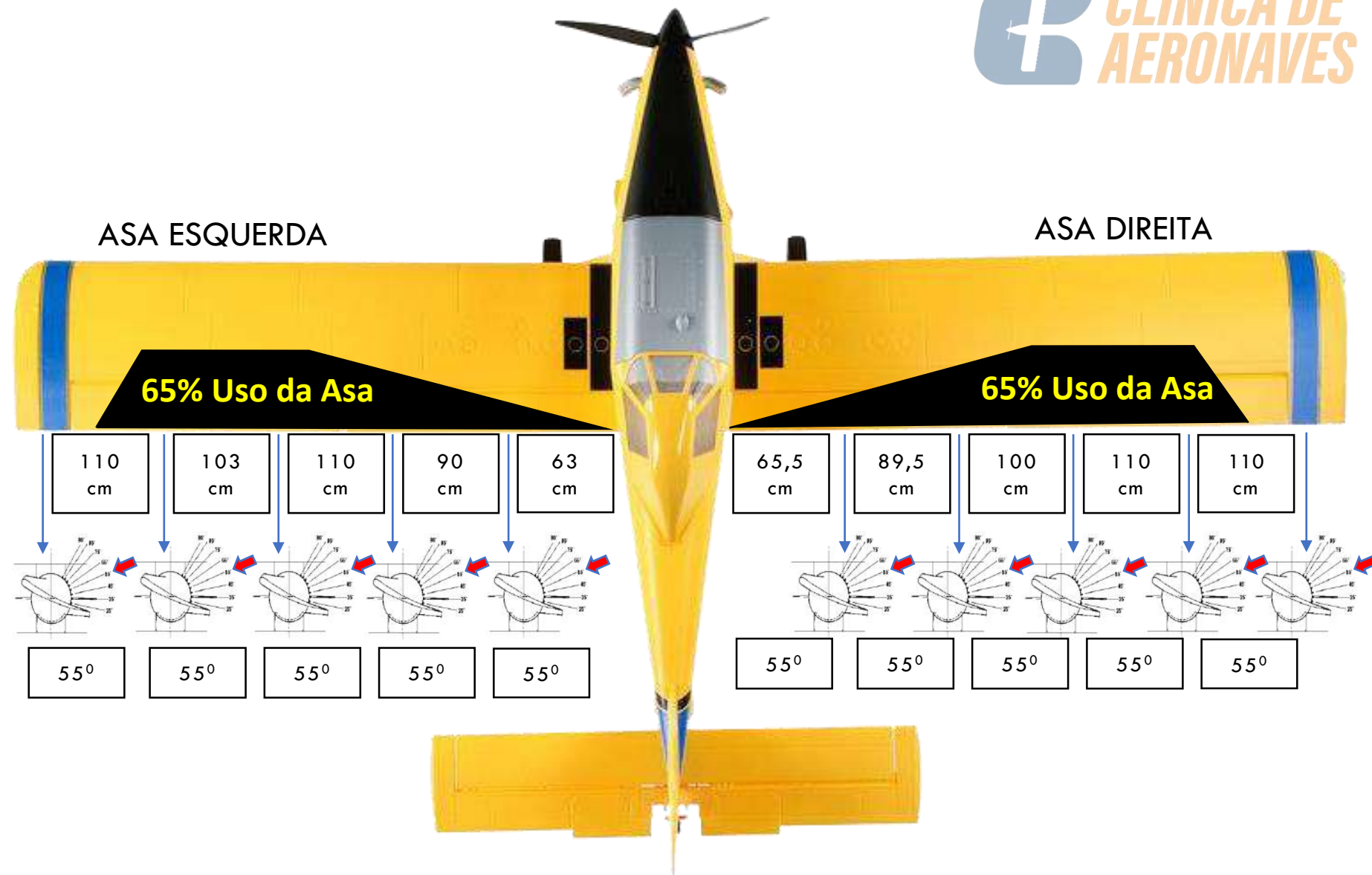


ESPECTRO DE GOTAS (ÂNGULO 30°)

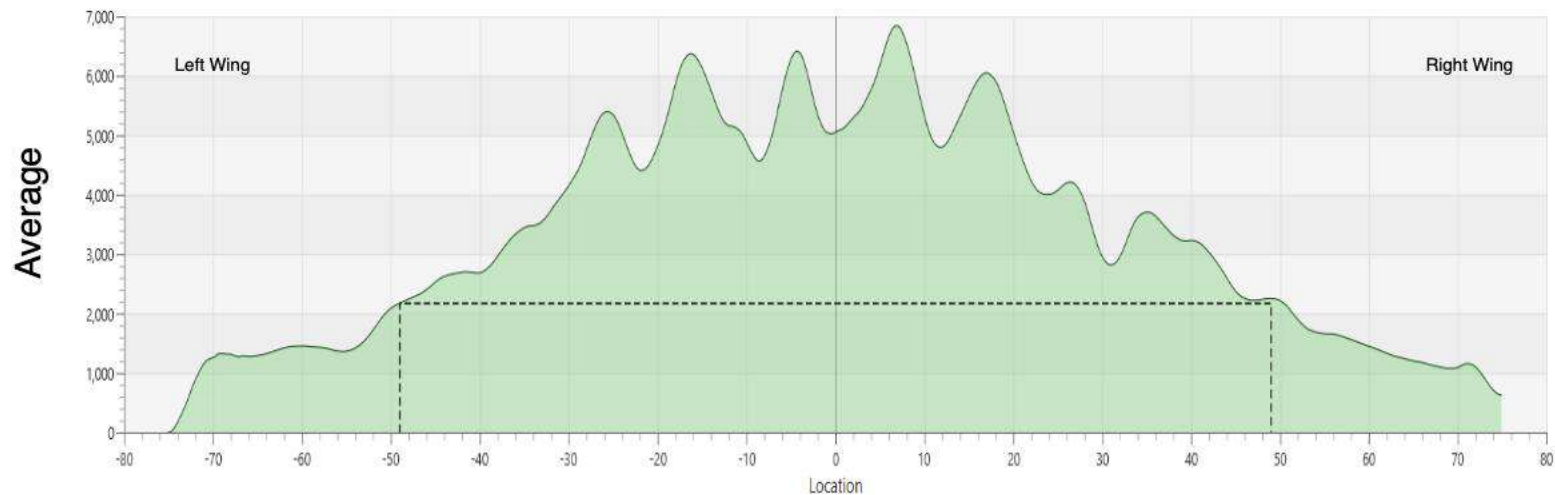
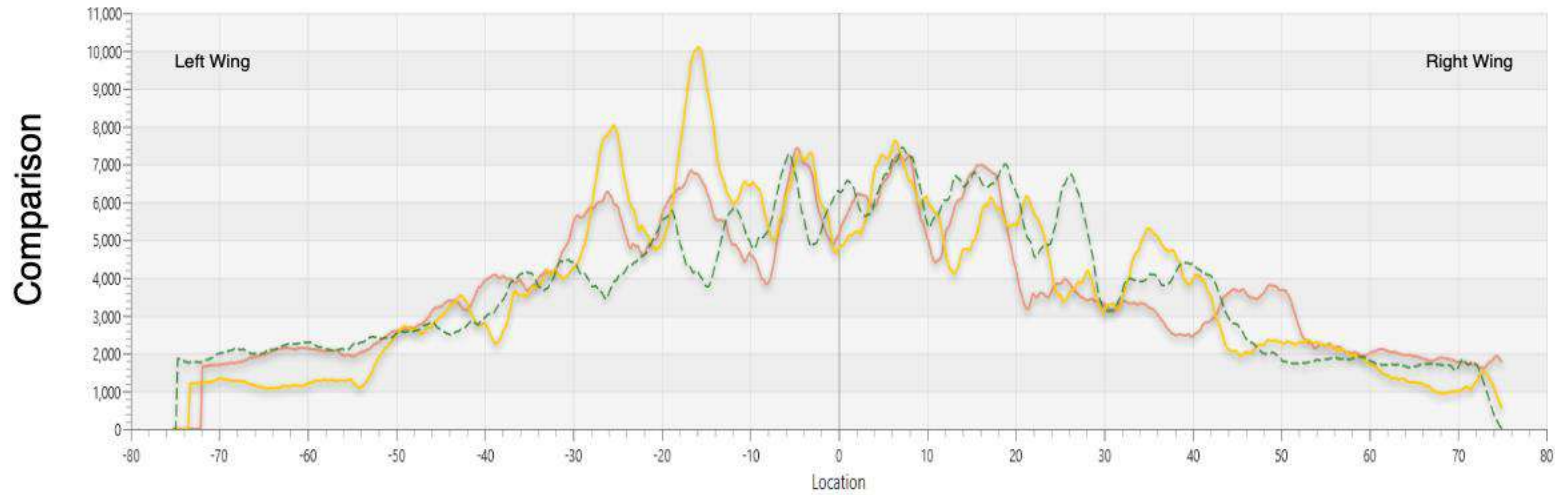


AIR TRACTOR 402 B

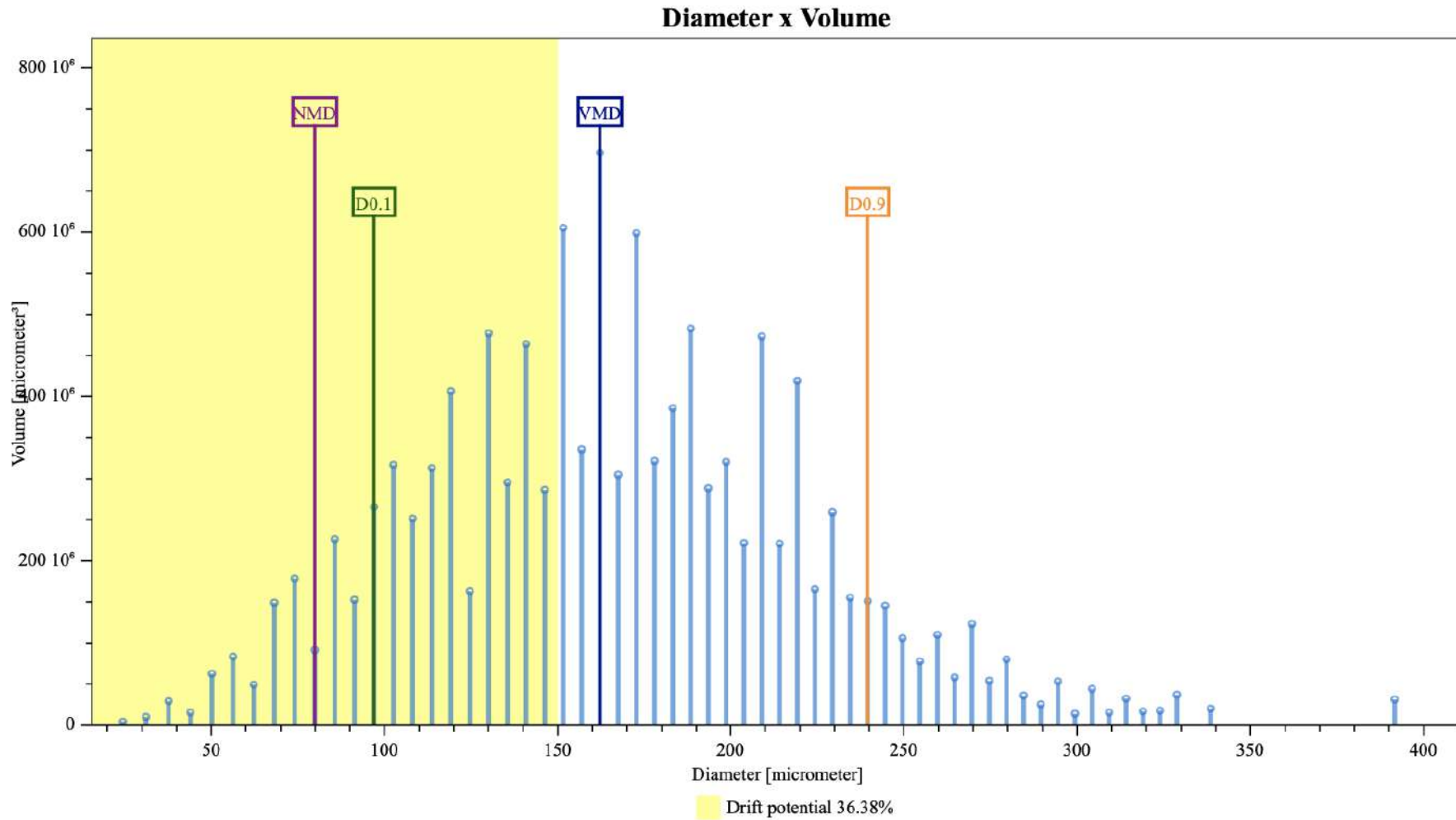
Taxa de Aplicação	12 Litros/hectare
Altura do voo	5,5 metros
Faixa Efetiva	30 metros
Uniformidade (C.V.)	14% (carrossel) 14% (vai e vem)
Velocidade do voo	230 Km/h
Bicos-VRU	Travicar-9
Pressão	37 PSI
DMV (Classe)	162 u (Fina)
DV 01	96 u
DV 09	239 u




FAIXA EFETIVA DE DISTRIBUIÇÃO



ESPECTRO DE GOTAS



The logo consists of a dark blue rounded square containing a white stylized airplane silhouette. The airplane is oriented vertically, with its tail at the top and its nose pointing downwards. The wings are spread out horizontally, and the tail fin is visible at the top.

CLÍNICA DE AERONAVES

PERFORMANCE PARA ALTA PRODUTIVIDADE